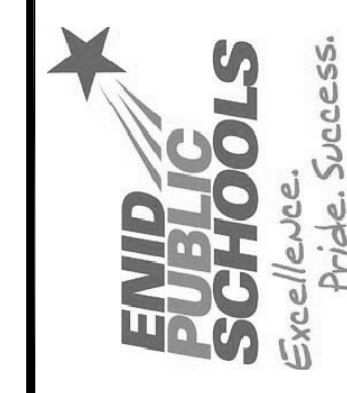


Easley Associates Architects
Enid, OK
223 N. Independence

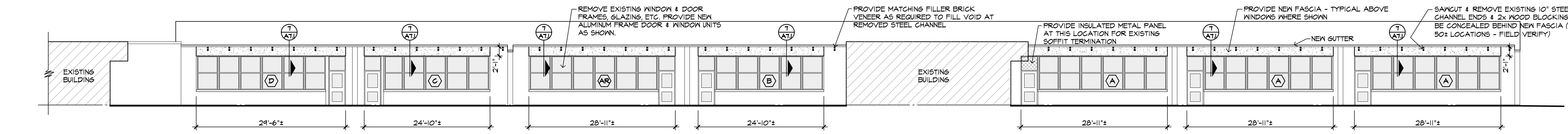


2012 ALTERATIONS TO
MONROE ELEMENTARY SCHOOL
400 WEST COTTONWOOD
INDEPENDENT SCHOOL DISTRICT NO. 57
500 SOUTH INDEPENDENCE ENID, OKLAHOMA

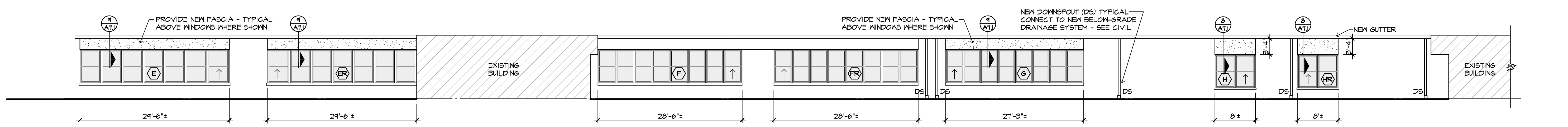


DATE: 02/14/2012
REV.:

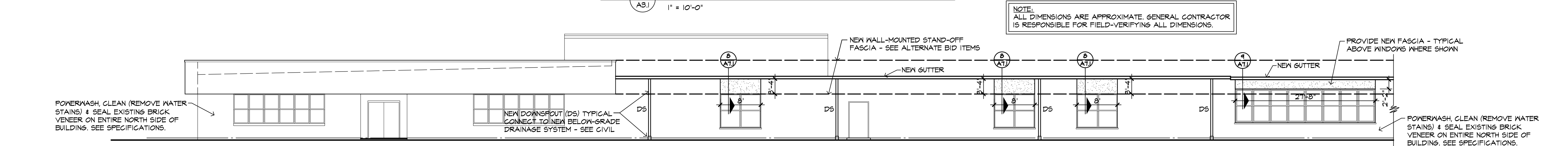
A3.1
OF 19



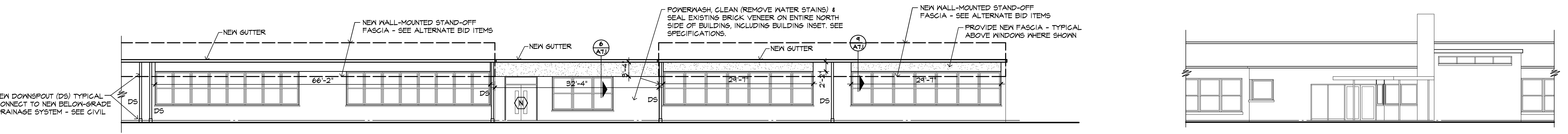
1 SOUTH ELEVATION - COURTYARD
1" = 10'-0"



2 NORTH ELEVATION - COURTYARD
1" = 10'-0"

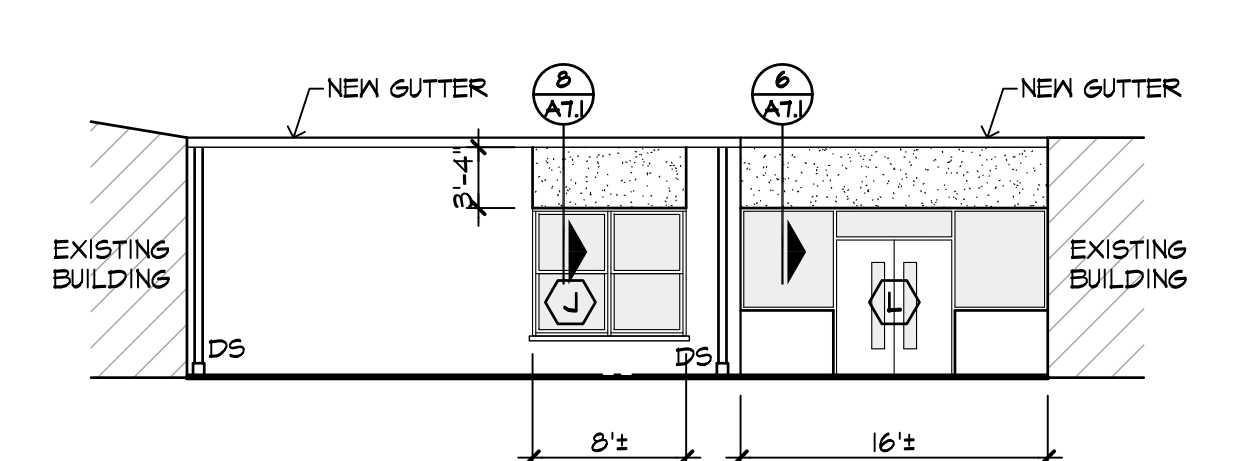


3 NORTH ELEVATION - EAST HALF
1" = 10'-0"

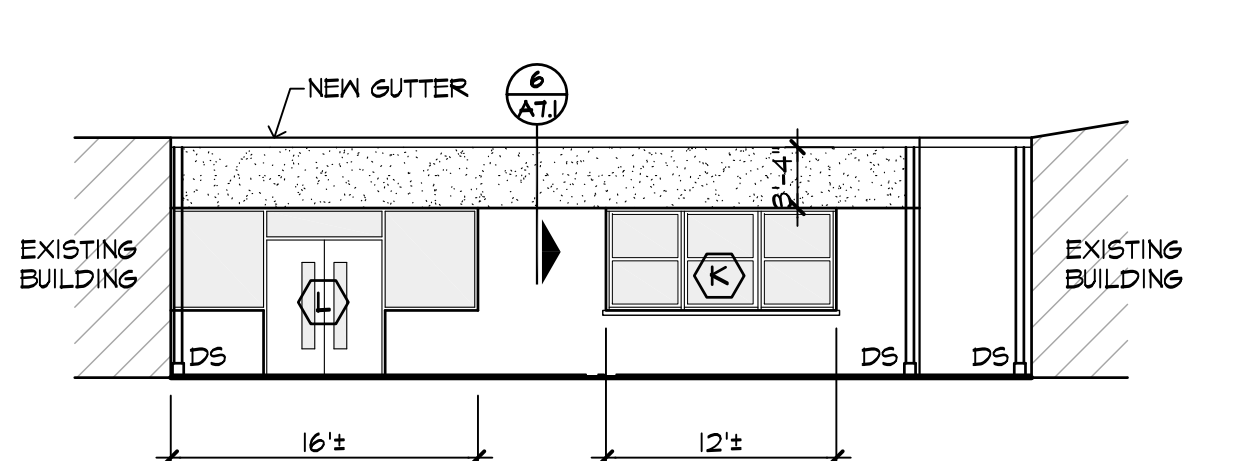


4 NORTH ELEVATION - WEST HALF
1" = 10'-0"

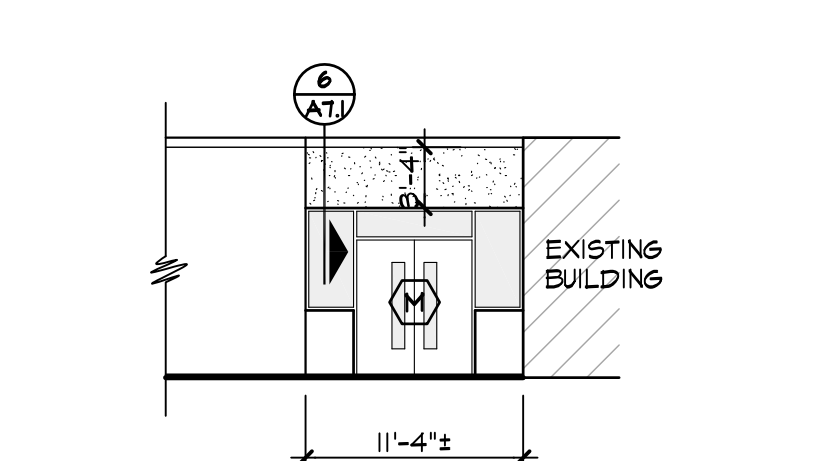
SOUTH ELEVATION @ ENTRANCE
1" = 10'-0"



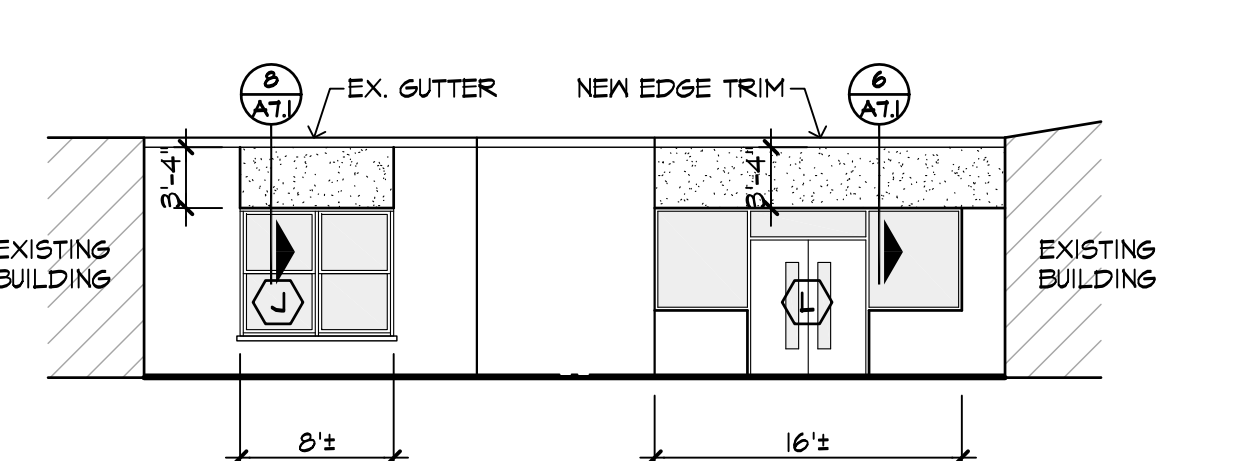
5 WEST ELEV. - COURTYARD
1" = 10'-0"



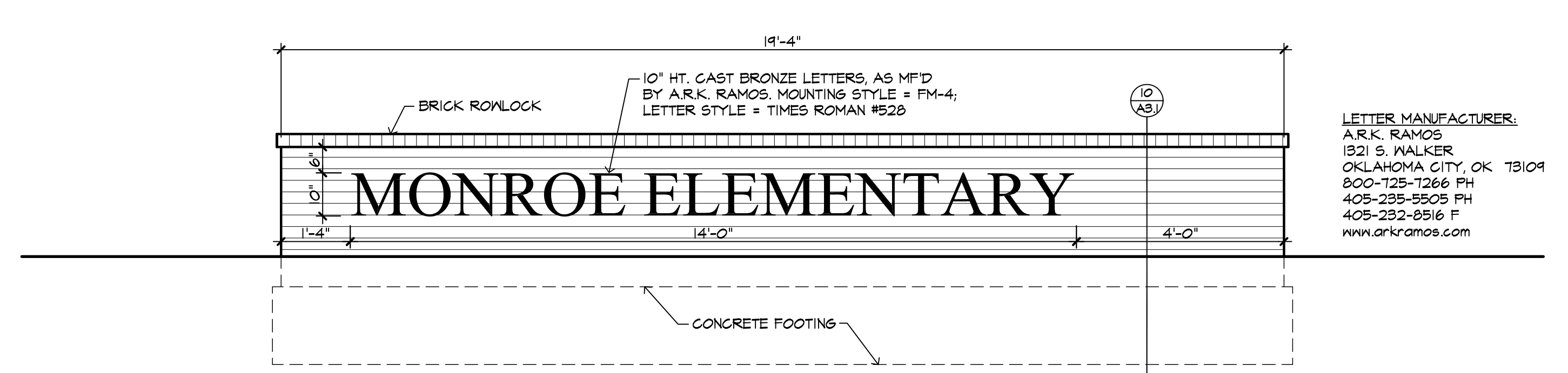
6 EAST ELEV. - COURTYARD
1" = 10'-0"



7 EAST ELEV. - CAFETERIA
1" = 10'-0"

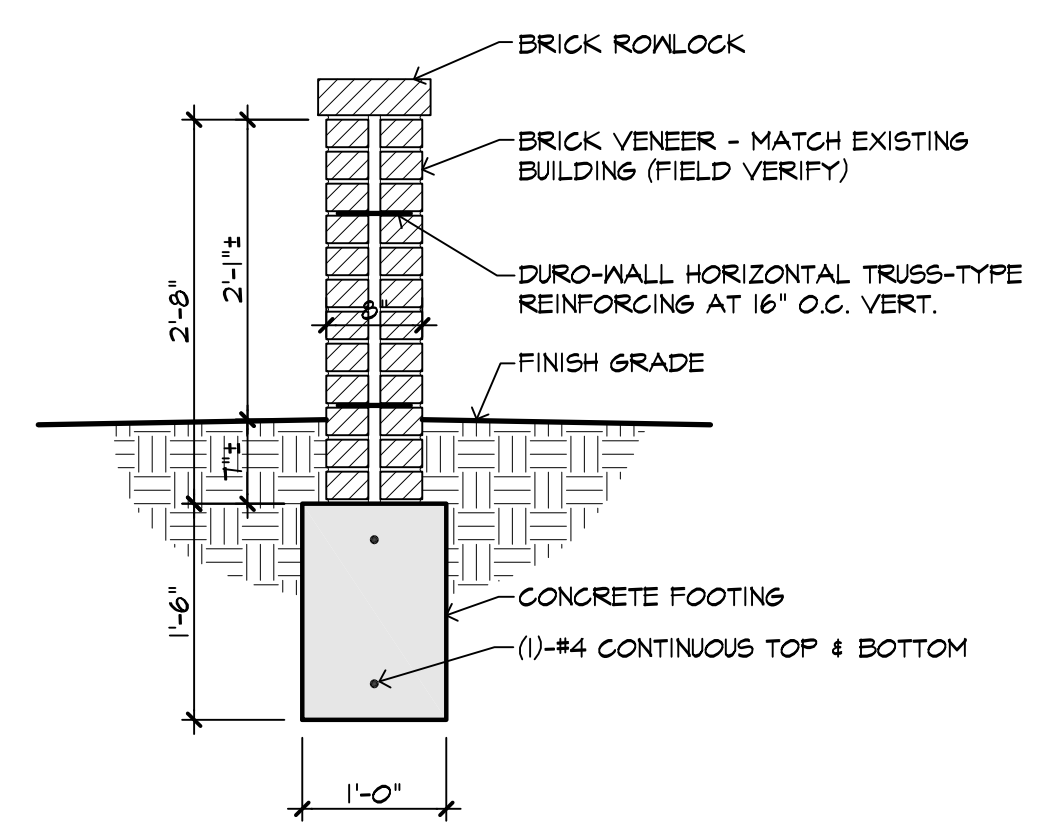


8 EAST ELEV. - WEST COURT.
1" = 10'-0"



9 SIGNAGE ELEVATION
1/2" = 1'-0" (SEE ALTERNATE BID ITEMS)

LETTER MANUFACTURER:
A.R.K. RAMOS
1321 S. WALKER
OKLAHOMA CITY, OK 73104
800-125-1266 FH
405-294-5505 FH
405-292-8516 F
www.arkramos.com



10 BRICK WALL SECTION
3/4" = 1'-0" (SEE ALTERNATE BID ITEMS)