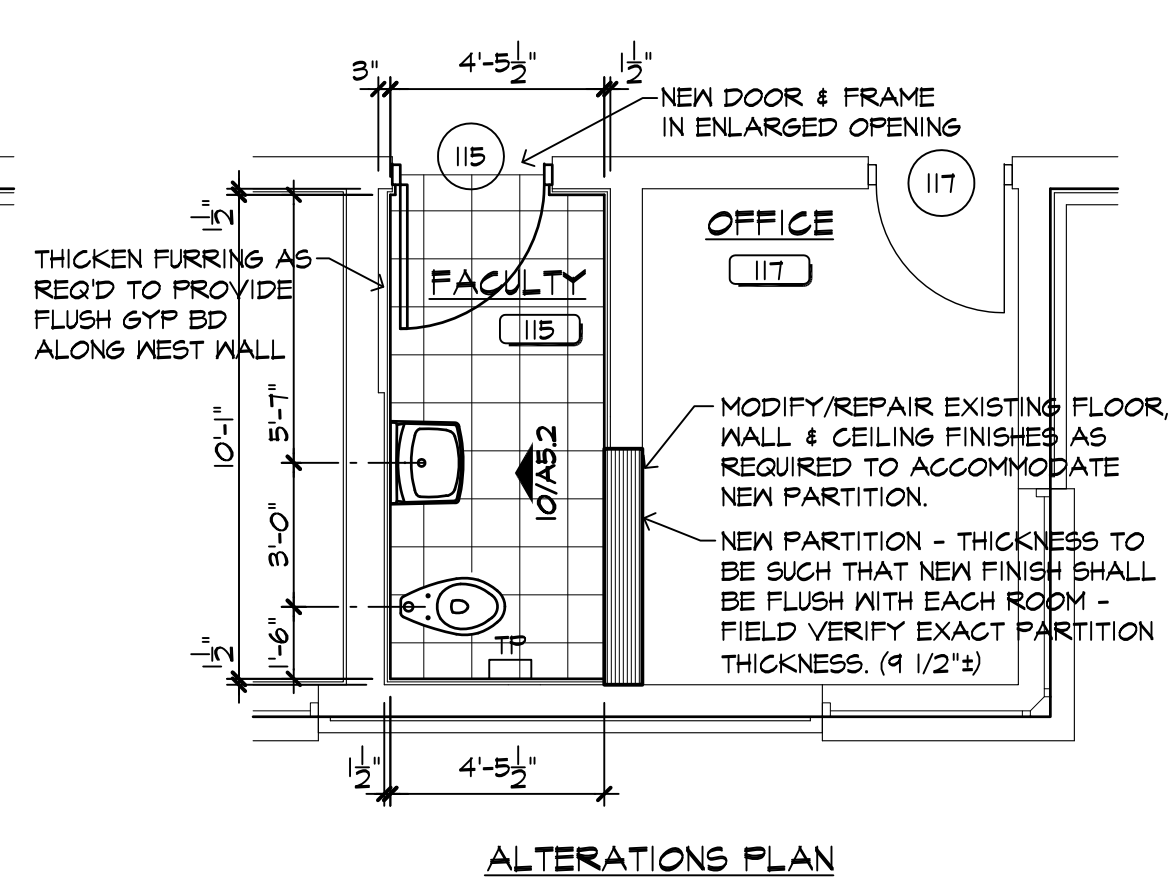
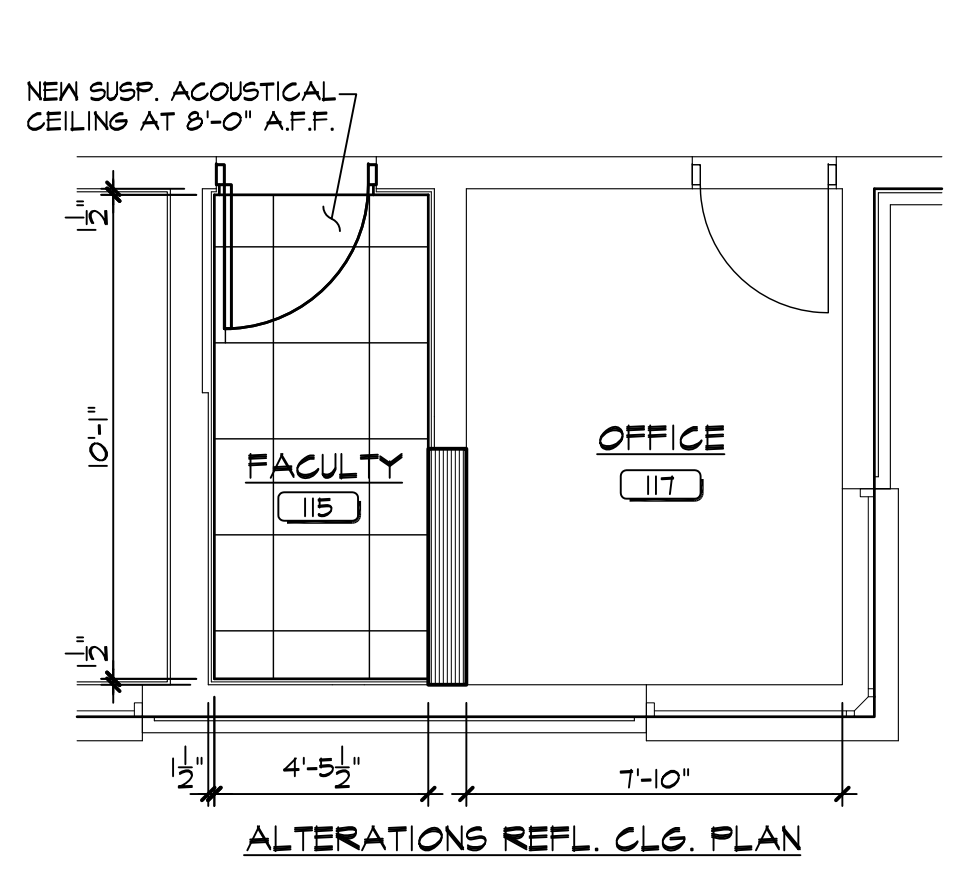


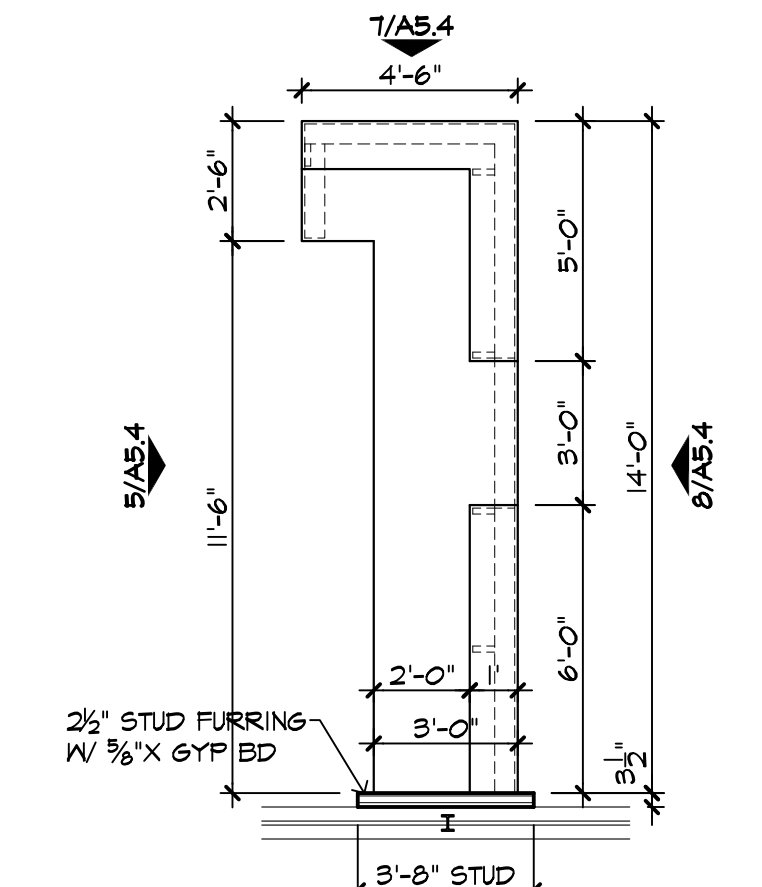
DEMOLITION PLAN



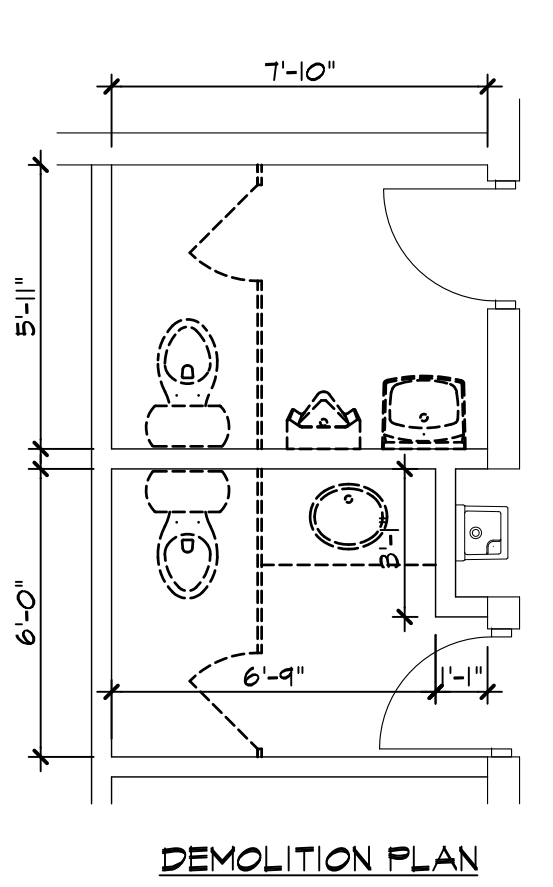
ALTERATIONS PLAN



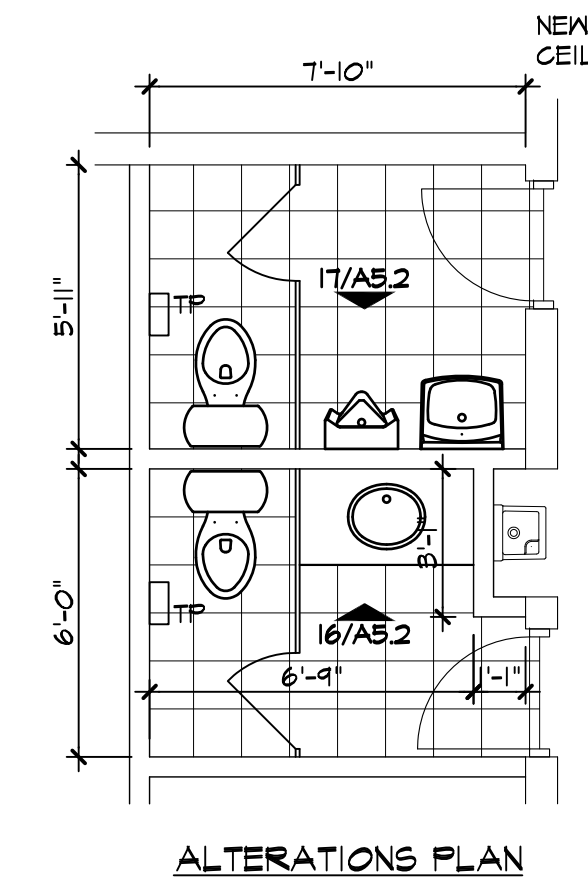
ALTERATIONS REFL. CLG. PLAN



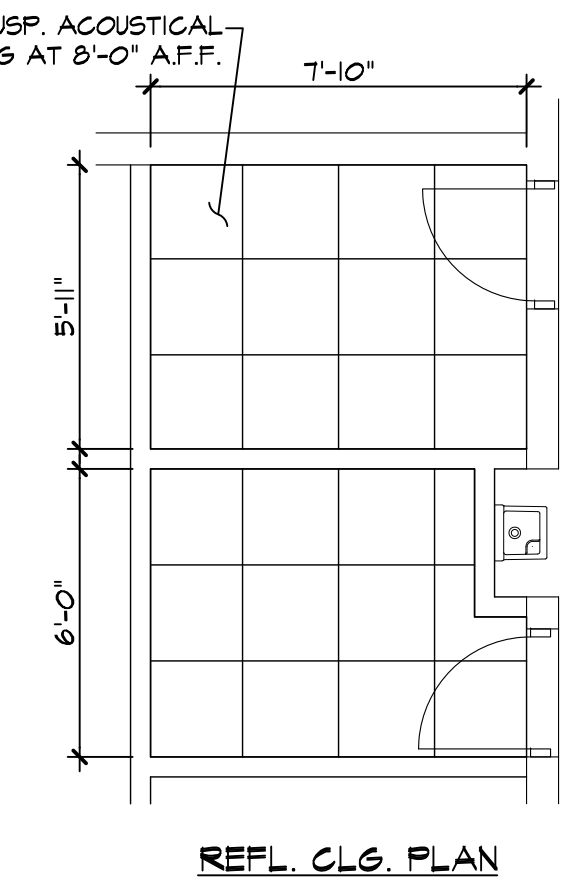
2 CIRCULATION DESK
1/4" = 1'-0"



DEMOLITION PLAN



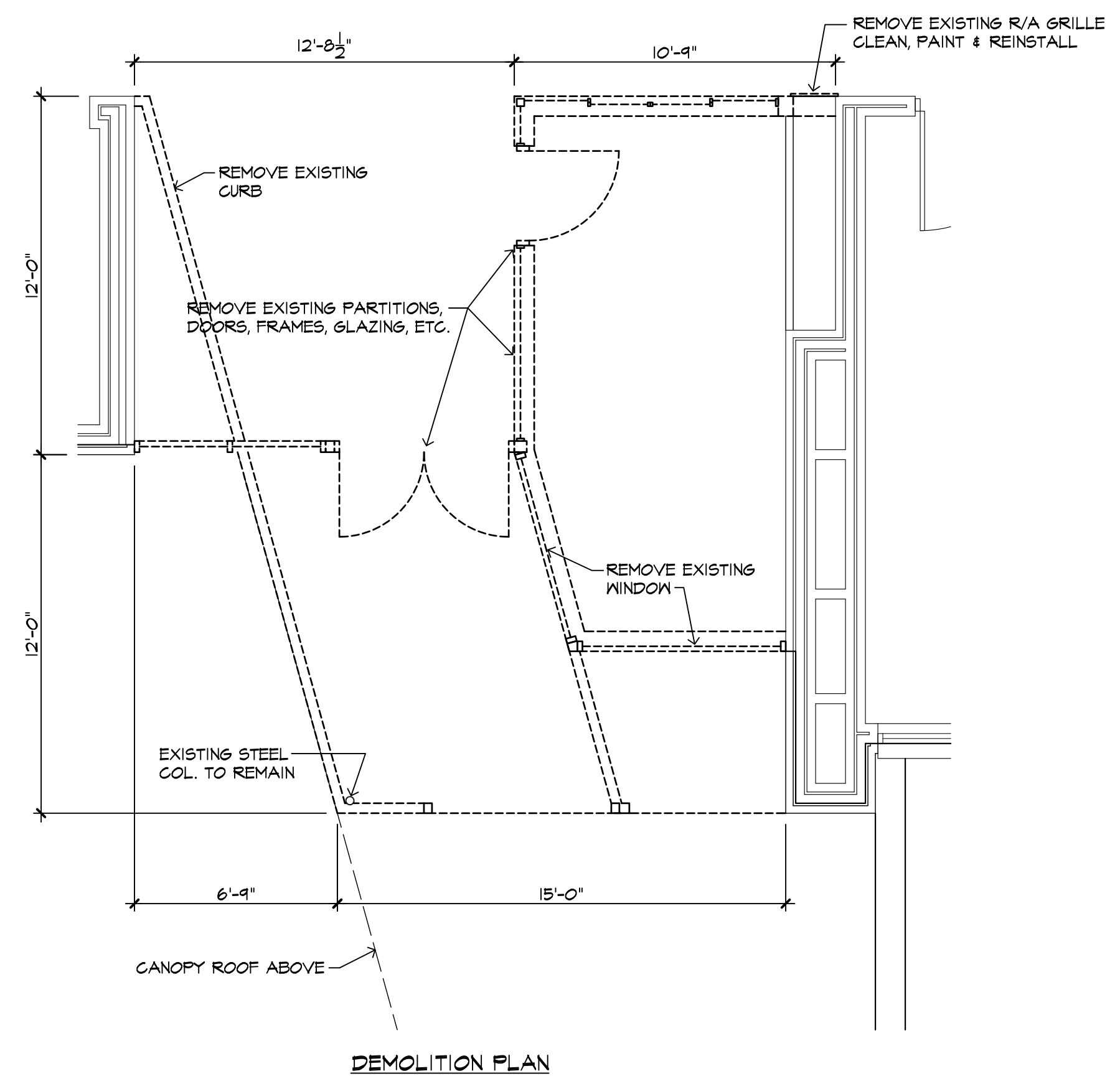
ALTERATIONS PLAN



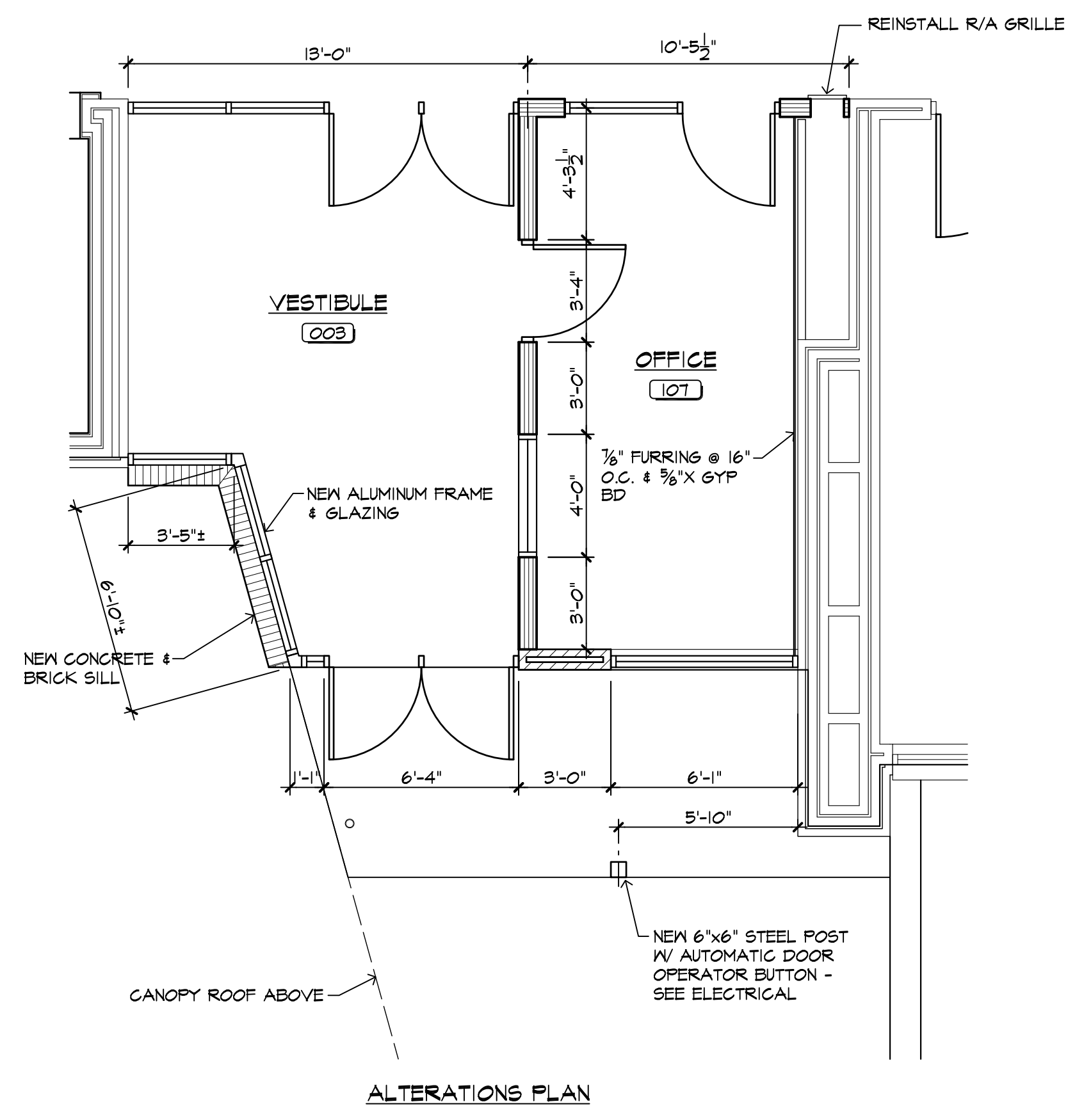
REFL. CLG. PLAN

4 ENLARGED PLANS RM.'S 006/007
1/4" = 1'-0"

1 ENLARGED PLANS RM. 115
1/4" = 1'-0"

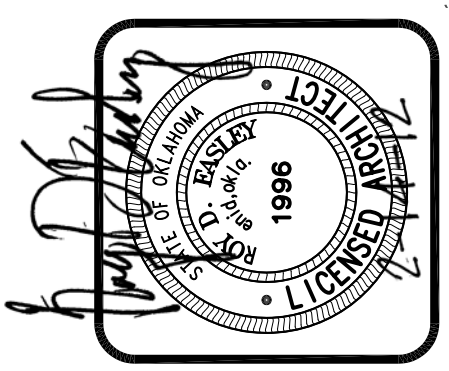


DEMOLITION PLAN



ALTERATIONS PLAN

3 ENLARGED PLANS RM. 003/107
1/4" = 1'-0" (SEE ALTERNATE BID ITEMS)



2012 ALTERATIONS TO
MONROE ELEMENTARY SCHOOL
400 WEST COTTONWOOD
INDEPENDENT SCHOOL DISTRICT NO. 57
500 SOUTH INDEPENDENCE ENID, OKLAHOMA



DATE: 02/14/2012
REV.:

A4.2
OF 19