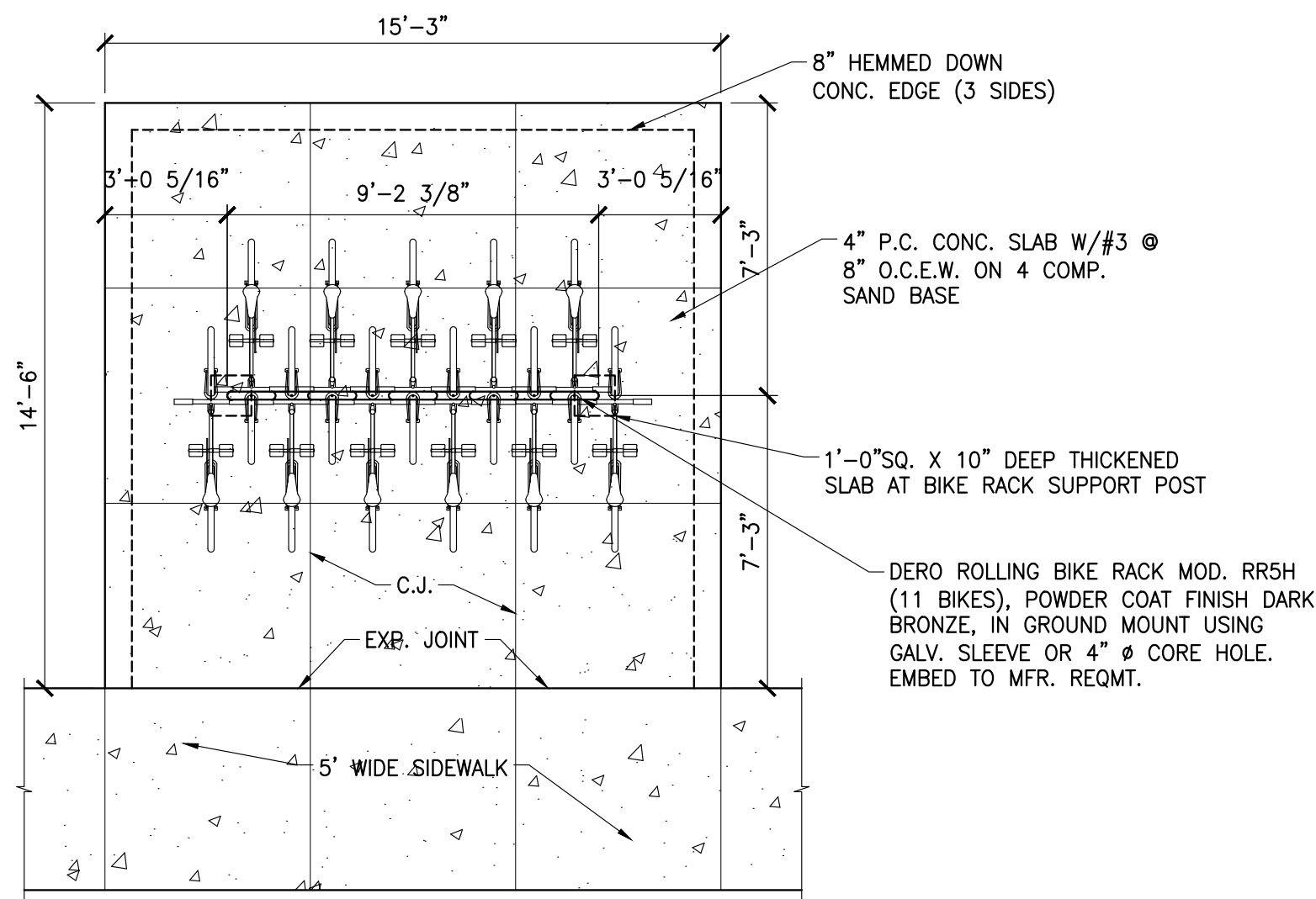
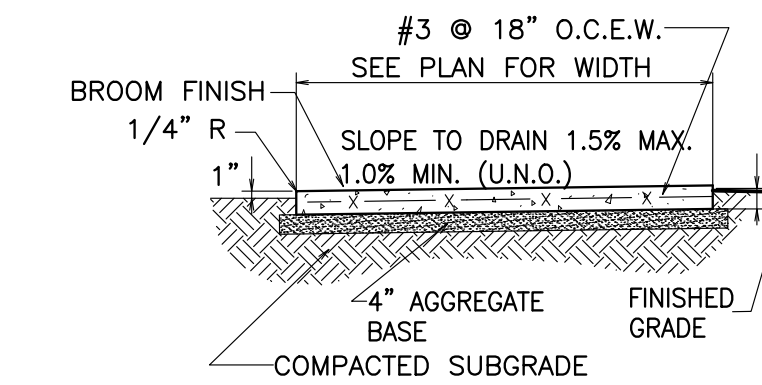


1 PAVING SECTION
N.T.S.

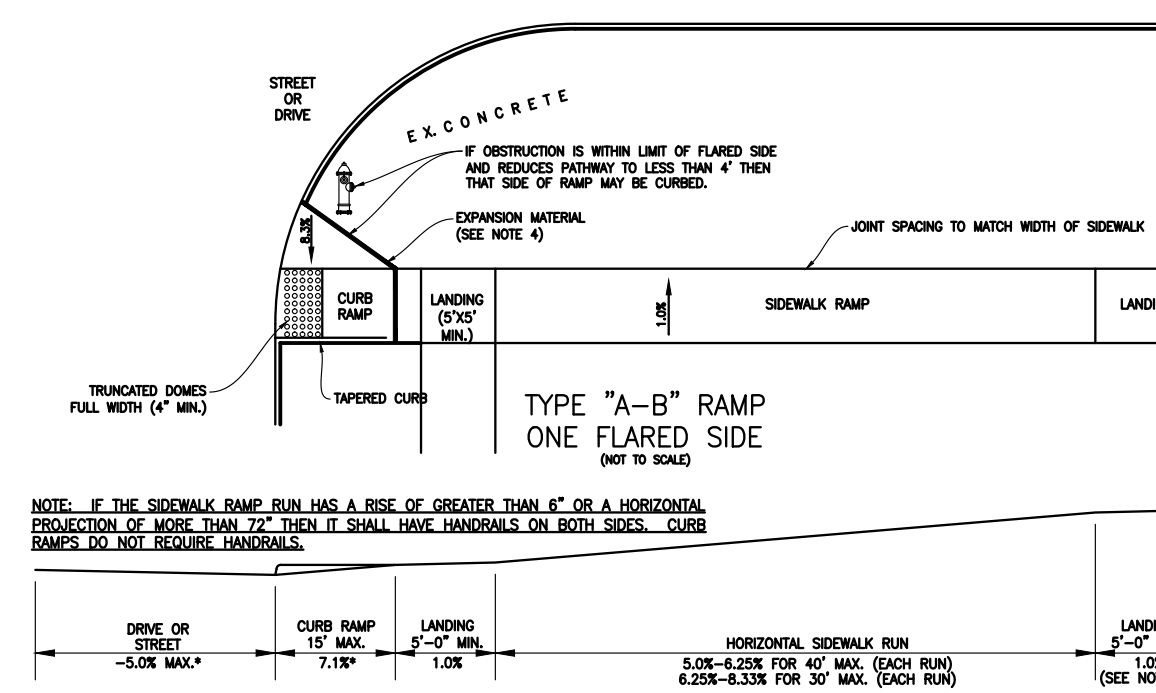


2 PLAN AT BIKE RACK - TOTAL 3 LOCATIONS
1/4" = 1'-0"

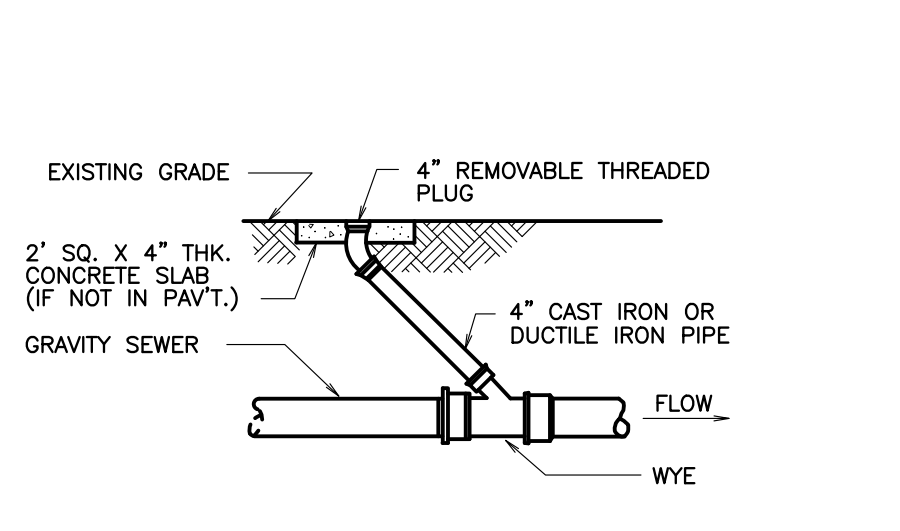
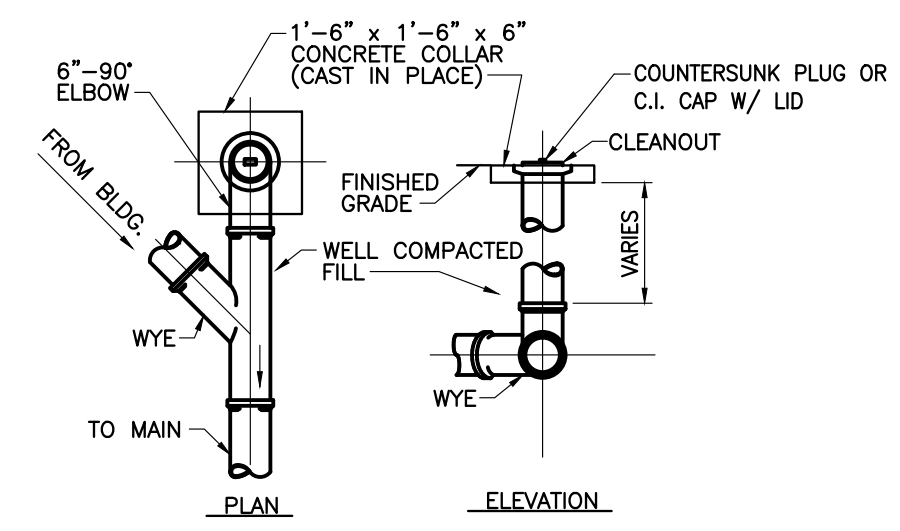
- NOTES:
- FOR AREAS WHERE THERE IS PEDESTRIAN TRAFFIC PERPENDICULAR TO RAMP CONSTRUCT FLARED SIDES WITH 8.3% SLOPE MAX.
 - LANDINGS SHALL BE 5-FT. WIDE MIN. BOTH WAYS. IF WIDTH OF RAMP RUN LEADING TO LANDING IS WIDER, LANDING SHALL BE WIDENED TO MATCH RAMP OR SIDEWALK RUN.
 - CURB RAMP MAY HAVE A MAXIMUM LENGTH OF 15-FT. A 5-FT. LANDING MUST CONSTRUCT RAMP AT 7.1% BE CONSTRUCTED AFTER A 15-FT. CURB RAMP RUN. MAXIMUM SLOPE FOR CITY OF ENID PROJECTS. RAMP SLOPE MAY BE INCREASED TO 8.3% OR 12:1 WITH APPROVAL OF THE ENGINEER IF FIELD CONDITIONS DICTATE A NECESSITY.
 - PLACE (3) 3/8" DOWELS 18" LONG AT EACH EXPANSION JOINT AND TIE SIDEWALK TO EXISTING STREET AND EXISTING SIDEWALK USING #3 REBAR AT 24" C-C.
 - CONSTRUCT ALL SIDEWALKS WITH 1.5% MAX. 1.0% MIN. CROSS SLOPE, IF FIELD CONDITIONS DICTATE OTHERWISE CROSS SLOPE MAY BE INCREASED TO 2.0% MAX. WITH APPROVAL OF ENGINEER.
 - ALL RAMP MUST COMPLY WITH MOST CURRENT VERSION OF FEDERAL ADA GUIDELINES FOR RIGHT-OF-WAY OR SHALL BE REMOVED AND REPLACED AT THE CONTRACTORS EXPENSE.
 - TRUNCATED DOMES SHALL BE CAST IRON, CASTINACT OR APPROVED EQUAL.



3 CONCRETE SIDEWALK
N.T.S.

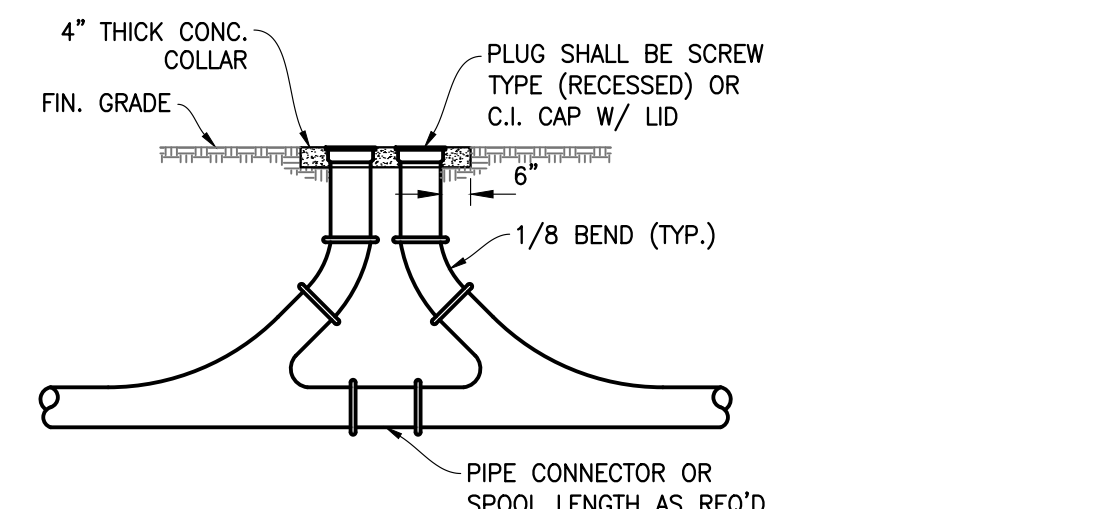
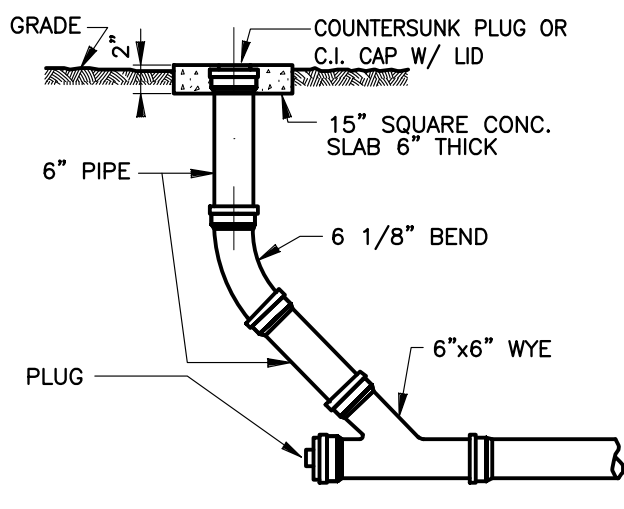


6 TYPICAL SIDEWALK DETAILS
N.T.S.



SEWER CLEANOUT

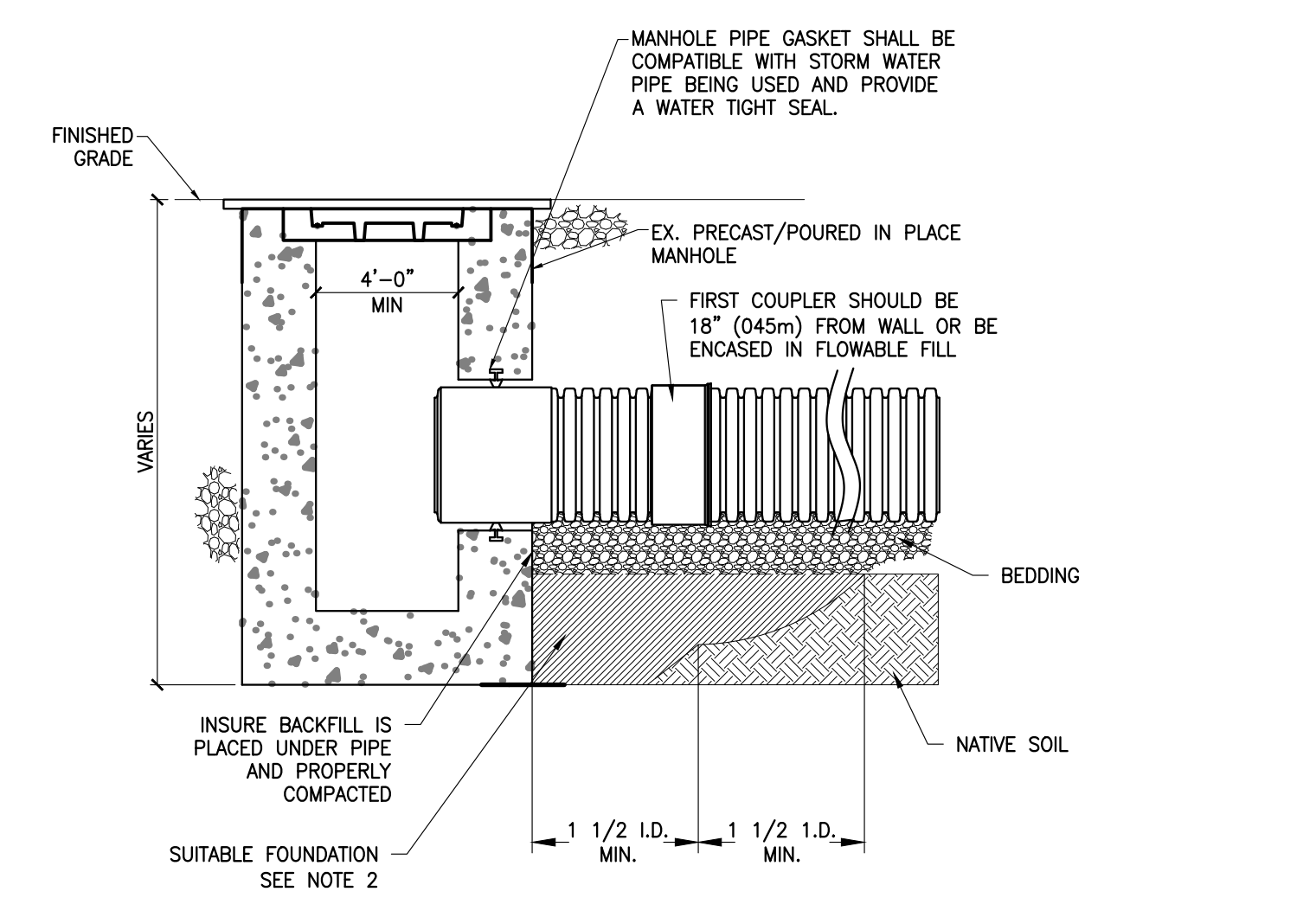
THROUGH FLOW CLEANOUT DETAIL



CLEANOUT TO GRADE

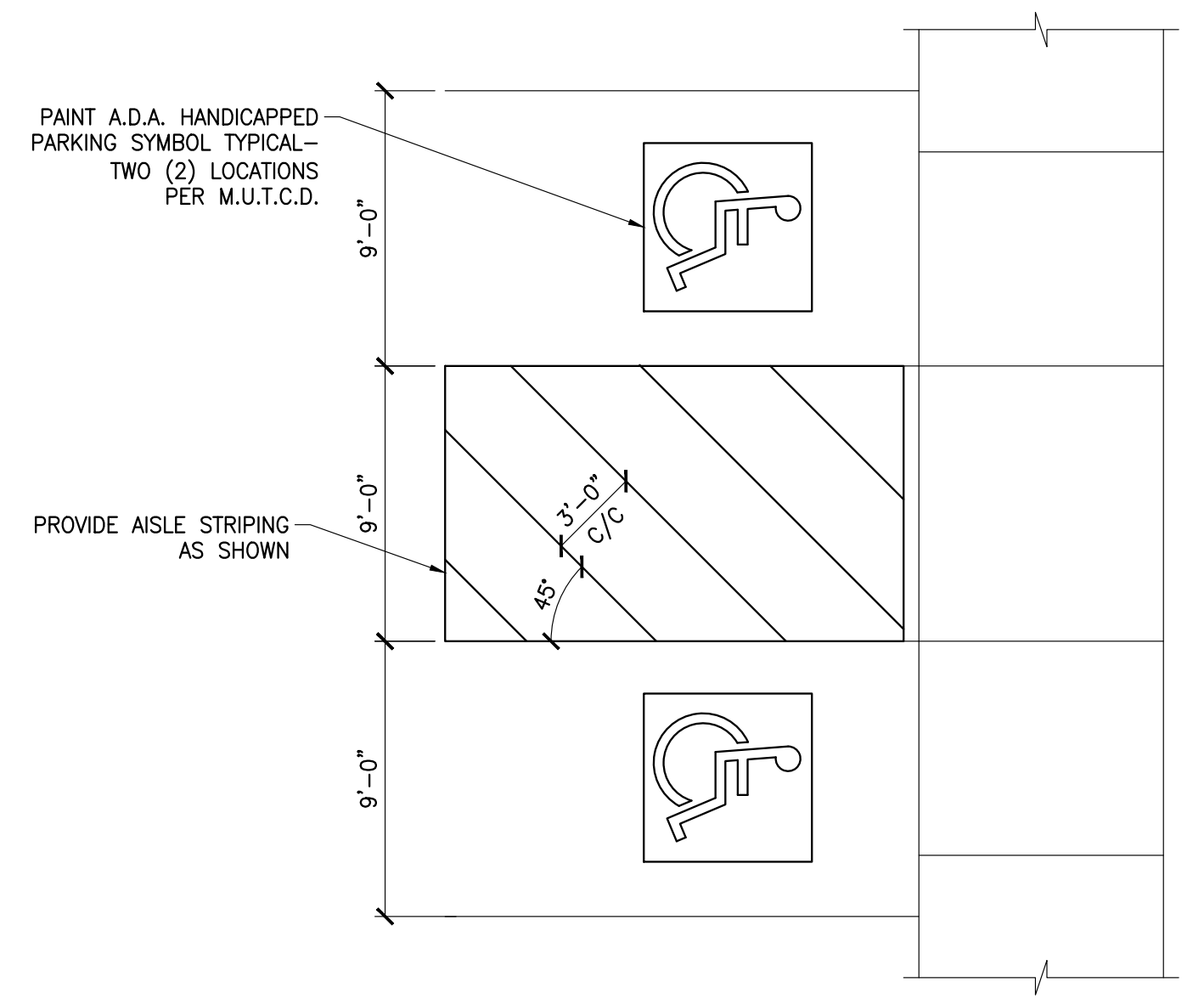
TWO WAY CLEAN OUT

4 TYPICAL CLEANOUT DETAILS
N.T.S.

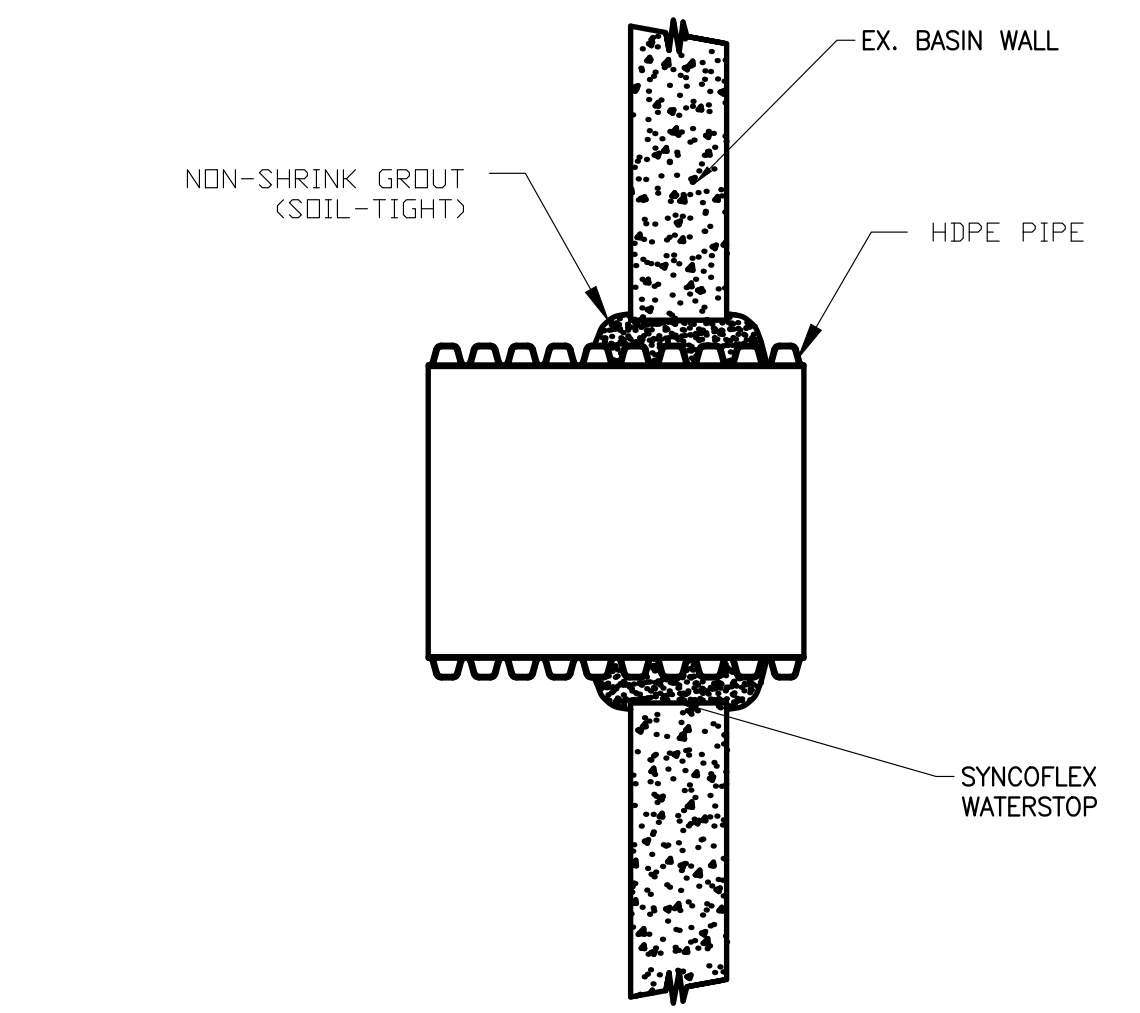


- MANHOLE NOTES:
- MAXIMUM INSERTION ANGLE SHALL NOT EXCEED REQUIREMENTS AS SPECIFIED BY THE MANUFACTURER.
 - EXTRA PRECAUTIONS MUST BE TAKEN TO PREVENT DIFFERENTIAL SETTLEMENT BETWEEN THE PIPE AND MANHOLE.

5 STRUCTURE CONNECTION INSTALLATION DETAIL
N.T.S.



7 HANDICAP PARKING STRIPING DETAIL
N.T.S.



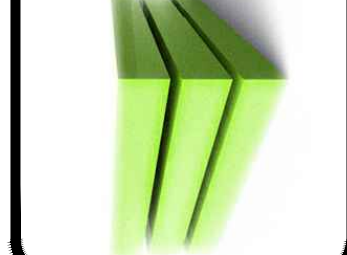
8 EX. STRUCTURE TO PIPE CONNECTION
N.T.S.



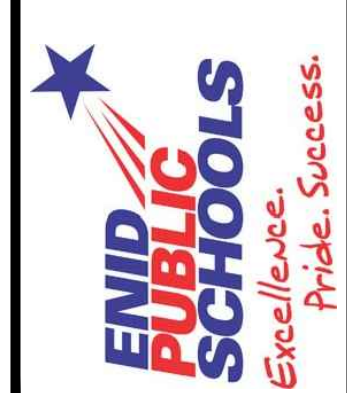
BRUEGGEMANN ENGINEERING
EXP. 63012
1434 N. INDEPENDENCE ST. ENID, OK 73701
580-236-6505 Phone 580-237-0868 Fax
C.A. #4627



Easley Associates Architects
223 N. Independence
Enid, OK



2012 ALTERATIONS TO
MONROE ELEMENTARY SCHOOL
400 WEST COTTONWOOD
INDEPENDENT SCHOOL DISTRICT NO. 57
500 SOUTH INDEPENDENCE ENID, OKLAHOMA
BRUEGGEMANN ENGINEERING PROJECT NO. 11.098



DATE: 02/14/2012
REV.: