



Easley Associates Architects  
223 N. Independence  
Enid, OK

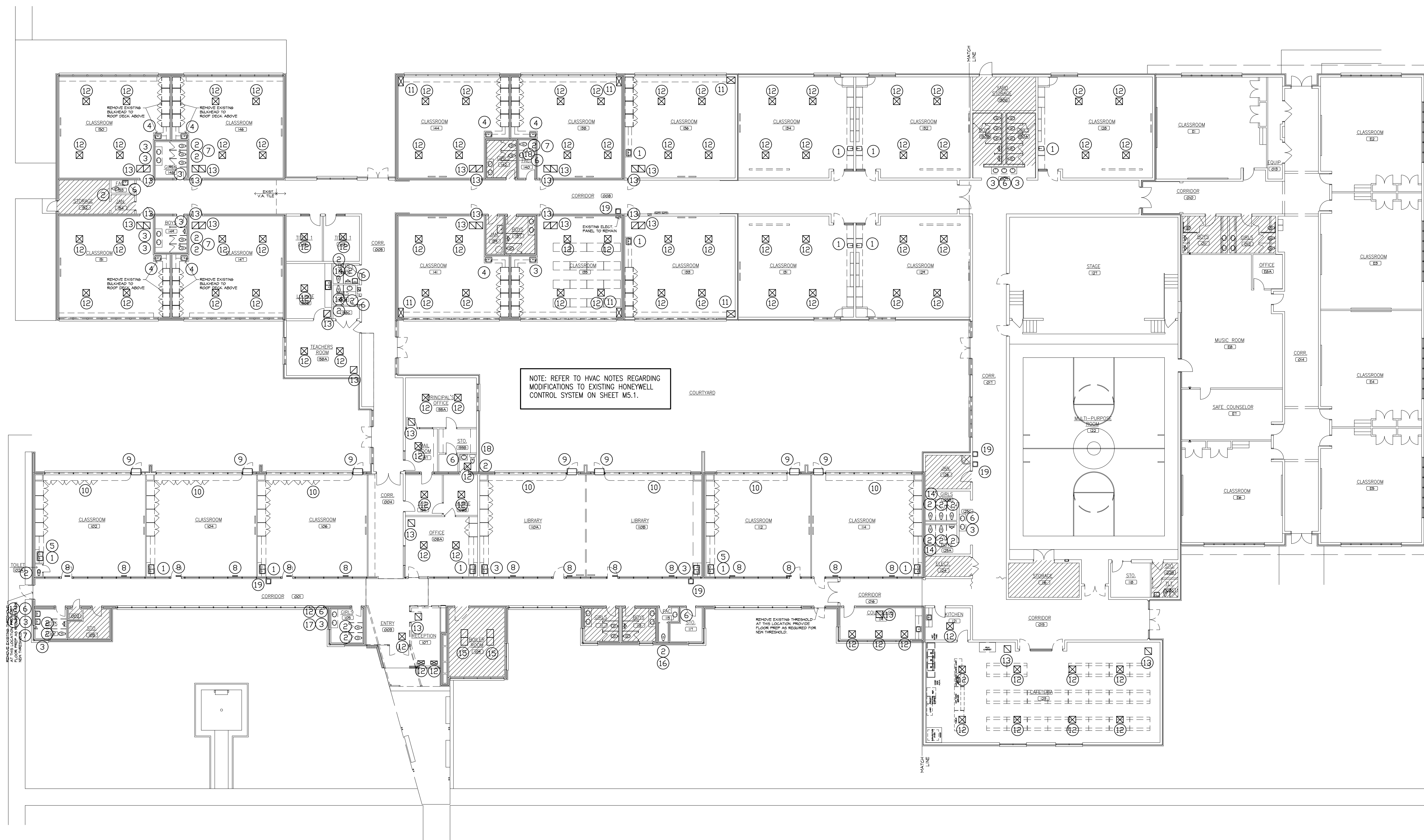


2012 ALTERATIONS TO  
MONROE ELEMENTARY SCHOOL  
400 WEST COTTONWOOD  
INDEPENDENT SCHOOL DISTRICT NO. 57  
500 SOUTH INDEPENDENCE ENID, OKLAHOMA



DATE: 02/04/2012  
REV.:

M1.1  
OF 11



**MECHANICAL DEMO KEYNOTES**

- 1 EXISTING SINK AND TRIM TO BE REMOVED. EXISTING SANITARY, VENT, CW AND HW SUPPLY ROUGH-IN TO REMAIN FOR CONNECTION TO NEW SINK.
- 2 EXISTING PLUMBING FIXTURE (WATER CLOSET OR URINAL) AND TRIM TO BE REMOVED. EXISTING SANITARY, VENT AND CW SUPPLY ROUGH-IN TO REMAIN FOR CONNECTION TO NEW FIXTURE. WHERE POSITION OF NEW FIXTURE IS SHIFTED, ADJUST PIPING AS REQUIRED. ANY NEW PIPING EXTENSION TO BE CONCEALED.
- 3 EXISTING PLUMBING FIXTURE AND TRIM TO BE REMOVED. EXISTING SANITARY, VENT, CW AND HW SUPPLY ROUGH-IN TO BE REMOVED AND CAPPED IN WALL, FLOOR OR CEILING SO THAT ANY EXISTING PIPING REMAINING IN OPERATION IS COMPLETELY CONCEALED.
- 4 EXISTING SINK AND TRIM TO BE REMOVED. EXISTING SANITARY, VENT, CW AND HW SUPPLY ROUGH-IN TO REMAIN FOR CONNECTION TO NEW SINK. EXTEND PIPING IN NEW MILLWORK FROM EXISTING ROUGH-IN TO NEW FIXTURE CONNECTIONS AT NEW FIXTURE LOCATION.
- 5 POINT OF USE TANK TYPE WATER HEATER TO BE REMOVED.
- 6 EXISTING LAVATORY AND TRIM TO BE REMOVED. EXISTING SANITARY, VENT, CW AND HW SUPPLY ROUGH-IN TO REMAIN FOR CONNECTION TO NEW FIXTURE. WHERE POSITION OF NEW FIXTURE IS SHIFTED, ADJUST PIPING AS REQUIRED. ANY NEW PIPING EXTENSION TO BE CONCEALED.
- 7 EXISTING FLOOR DRAIN GRATE/CLEANOUT COVER, ETC. TO BE REMOVED FOR REPLACEMENT WITH NEW GRATE OR COVER. COORDINATE FINAL INSTALLATION AND ELEVATION OF NEW GRATE/COVER WITH NEW FLOOR FINISH.
- 8 EXISTING SIDEWALL GRILLE TO BE REMOVED. CAP EXISTING DUCTWORK BEHIND WALL.
- 9 EXISTING THRU-WALL HVAC UNIT TO BE REMOVED.
- 10 EXISTING MILLWORK TO BE REMOVED BY OTHERS. MECHANICAL CONTRACTOR TO DEMOLISH AND REMOVE ANY EXISTING BOILER PIPING, RADIATORS, SUPPLY DUCTWORK, AND ASSOCIATED COMPONENTS. EXISTING OUTSIDE AIR LOUVER TO BE ABANDONED AND SEALED.
- 11 EXISTING MILLWORK TO BE REMOVED BY OTHERS. MECHANICAL CONTRACTOR TO DEMOLISH AND REMOVE EXISTING FURNACE CASING, RETURN GRILLE, SUPPLY DUCTWORK, AND ASSOCIATED COMPONENTS. EXISTING OUTSIDE AIR LOUVER TO BE ABANDONED AND SEALED.
- 12 EXISTING CEILING DIFFUSER TO BE REMOVED. EXISTING BRANCH DUCT TO REMAIN FOR RE-INSTALLATION AND CONNECTION OF NEW CEILING DIFFUSER. VERIFY EXACT LOCATION AND SIZE OF EXISTING. COORDINATE WITH NEW CEILING.
- 13 EXISTING RETURN AIR GRILLE TO BE REMOVED. EXISTING DUCTWORK TO REMAIN FOR RE-INSTALLATION AND CONNECTION OF NEW RETURN GRILLE. VERIFY EXACT LOCATION AND SIZE OF EXISTING. COORDINATE WITH NEW CEILING.
- 14 EXISTING TOILET CEILING EXHAUST GRILLE TO BE REMOVED. EXISTING BRANCH DUCT TO REMAIN FOR RE-INSTALLATION AND CONNECTION OF NEW RETURN GRILLE IN NEW CEILING. VERIFY EXACT LOCATION AND SIZE OF EXISTING. COORDINATE WITH NEW CEILING.
- 15 EXISTING TWINNED FURNACE UNITS. ONE EXISTING UNIT TO REMAIN IN OPERATION. DISCONNECT CONTROLS FROM ONE TWINNED FURNACE AND REMOVE TO LEAVE ONLY ONE FURNACE OPERATIONAL. ABANDONED FURNACE TO BE REMOVED AND RETURNED TO OWNER FOR STORAGE. MODIFY EXISTING DUCTWORK AS REQUIRED TO ALLOW CONNECTION OF EXISTING FURNACE REMAINING IN OPERATION TO EXISTING DUCTWORK. PROVIDE NEW TRANSITIONS AS REQUIRED FOR PROPER AIRFLOW.
- 16 EXISTING WALL MOUNTED EXHAUST FAN AND WALL CAP TO BE REMOVED.
- 17 EXISTING WALL MOUNTED EXHAUST FAN TO BE REMOVED. EXISTING DUCT AND WALL CAP TO REMAIN FOR RE-CONNECTION TO NEW FAN.
- 18 EXISTING CEILING EXHAUST FAN TO BE REMOVED. EXISTING BRANCH DUCT TO REMAIN FOR RE-CONNECTION TO NEW FAN.

NOTE: REFER TO HVAC NOTES REGARDING MODIFICATIONS TO EXISTING HONEYWELL CONTROL SYSTEM ON SHEET M5.1.

A OVERALL MECHANICAL DEMO PLAN  
M1.1 1/16" = 1'-0"

