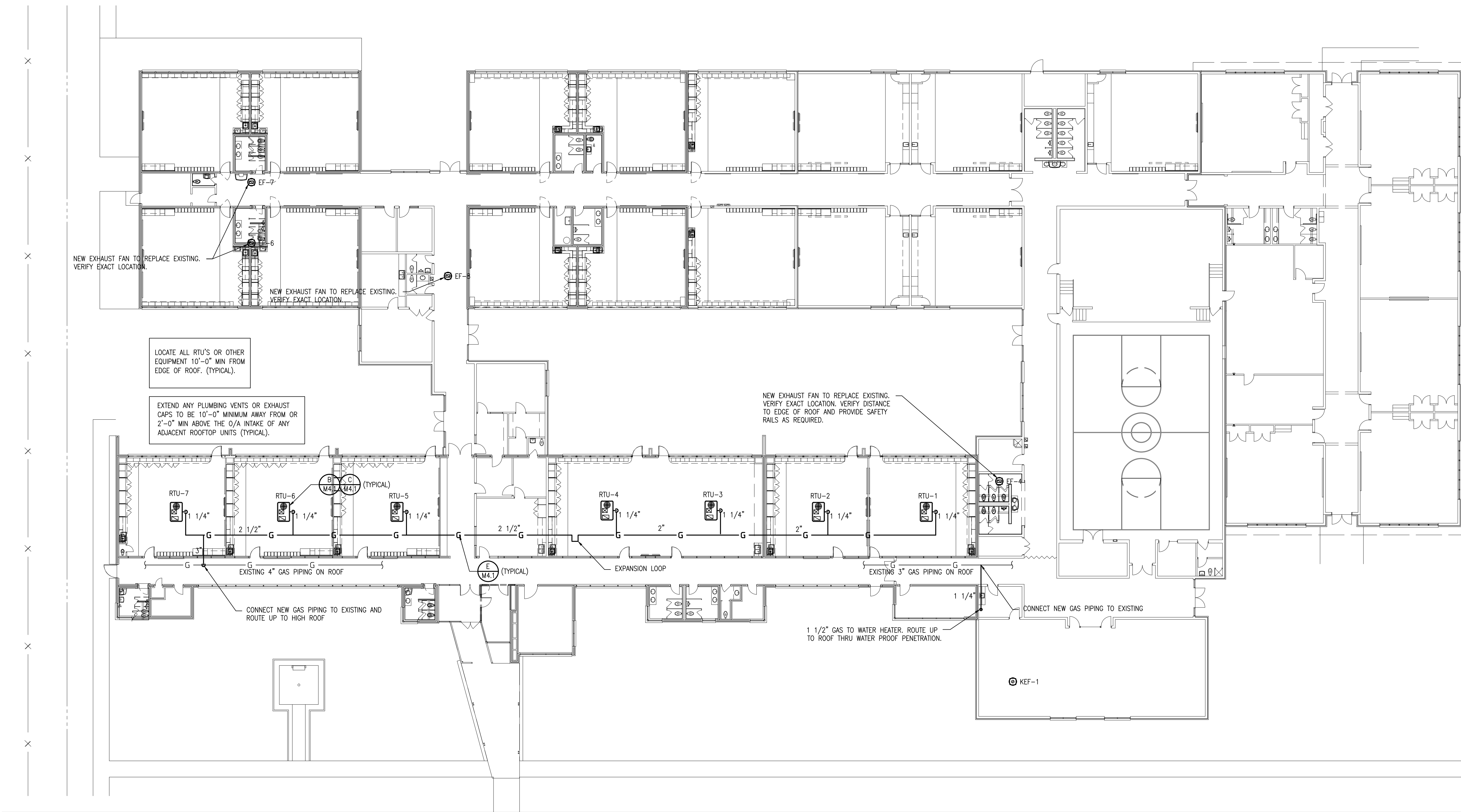


2012 ALTERATIONS TO  
**MONROE ELEMENTARY SCHOOL**  
 400 WEST COTTONWOOD  
 INDEPENDENT SCHOOL DISTRICT NO. 57  
 500 SOUTH INDEPENDENCE ENID, OKLAHOMA



DATE: 02/04/2012  
 REV.:

M2.2  
 OF 11



LOCATE ALL RTU'S OR OTHER EQUIPMENT 10'-0" MIN FROM EDGE OF ROOF. (TYPICAL).

EXTEND ANY PLUMBING VENTS OR EXHAUST CAPS TO BE 10'-0" MINIMUM AWAY FROM OR 2'-0" MIN ABOVE THE O/A INTAKE OF ANY ADJACENT ROOFTOP UNITS (TYPICAL).

NEW EXHAUST FAN TO REPLACE EXISTING. VERIFY EXACT LOCATION. VERIFY DISTANCE TO EDGE OF ROOF AND PROVIDE SAFETY RAILS AS REQUIRED.

CONNECT NEW GAS PIPING TO EXISTING AND ROUTE UP TO HIGH ROOF

1 1/2" GAS TO WATER HEATER. ROUTE UP TO ROOF THRU WATER PROOF PENETRATION.

CONNECT NEW GAS PIPING TO EXISTING

**A** OVERALL MECHANICAL ROOF PLAN  
 M2.2 1/16" = 1'-0"

