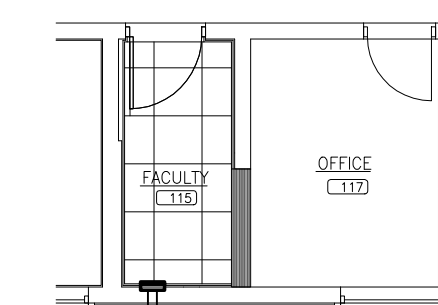
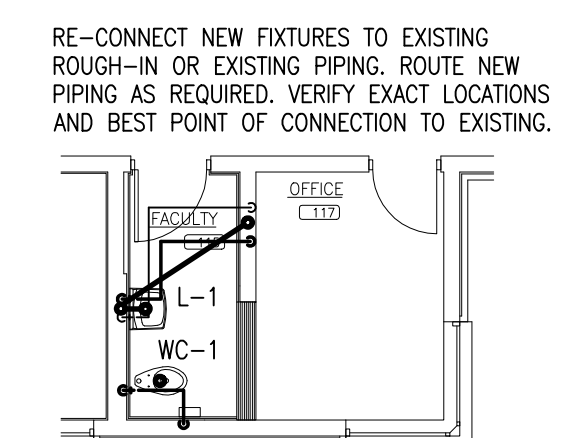
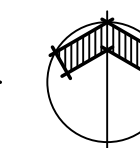


B PARTIAL PLUMBING/HVAC PLANS RMS 006/007
 M3.3 1/8" = 1'-0"



A PARTIAL PLUMBING/HVAC PLANS RM 115
 M3.3 1/8" = 1'-0"



2012 ALTERATIONS TO
 MONROE ELEMENTARY SCHOOL
 400 WEST COTTONWOOD
 INDEPENDENT SCHOOL DISTRICT NO. 57
 500 SOUTH INDEPENDENCE ENID, OKLAHOMA



DATE: 02/04/2012
 REV.: