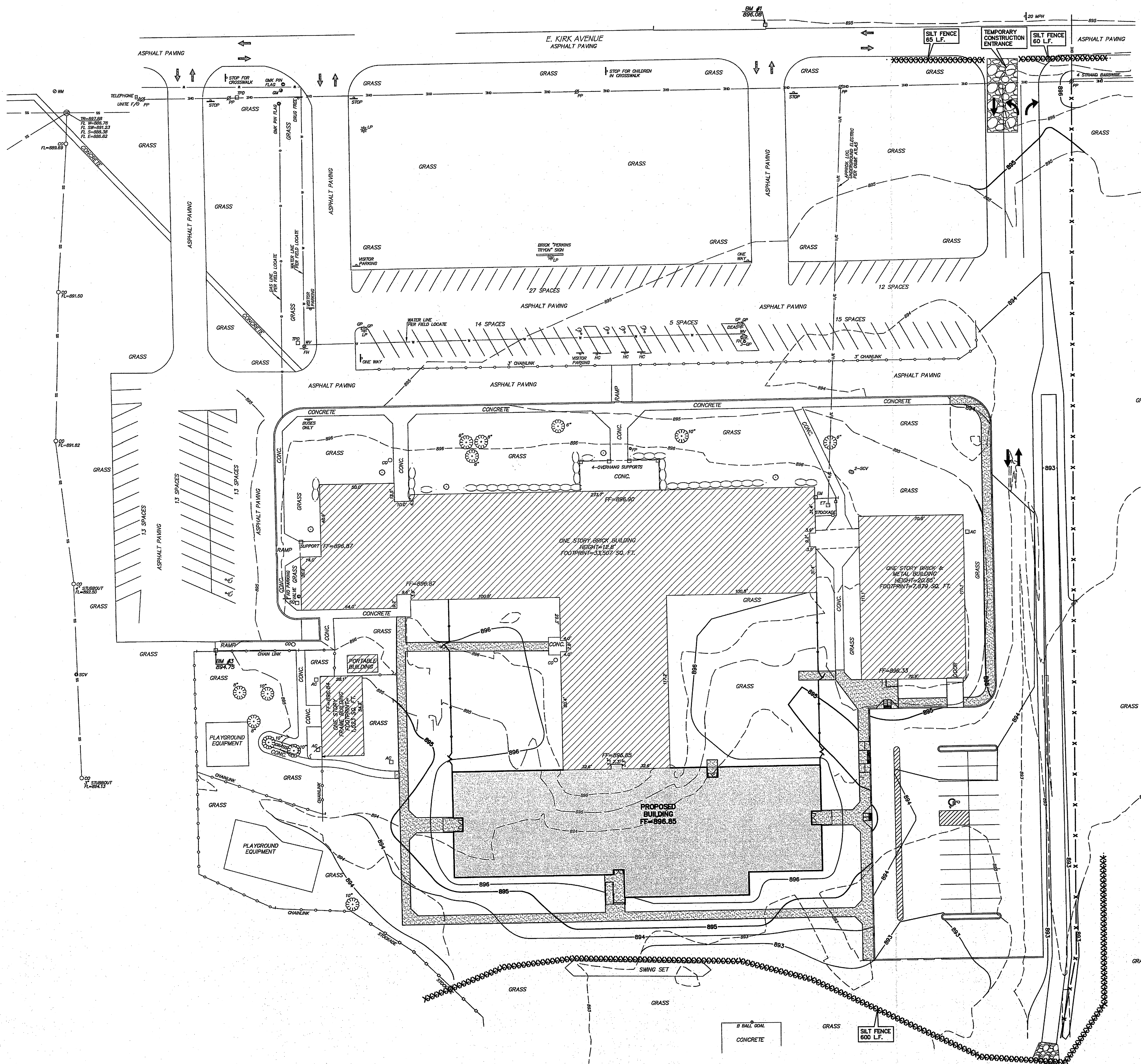


- GENERAL EROSION CONTROL NOTES:
1. ALL WORK PERFORMED AND MATERIALS SUPPLIED SHALL CONFORM TO THE SITE WORK SPECIFICATIONS. ANY WORK NOT COVERED IN THE SITE WORK SPECIFICATIONS SHALL CONFORM TO THE CITY'S "STANDARD SPECIFICATIONS FOR THE CONSTRUCTION OF PUBLIC IMPROVEMENTS" OR "STANDARD SPECIFICATIONS FOR HIGHWAY CONSTRUCTION, OKLAHOMA DEPARTMENT OF TRANSPORTATION, EDITION OF 1997" AND SUPPLEMENTALS.
 2. THE CONTRACTOR SHALL BE RESPONSIBLE FOR NOTIFYING ALL UTILITY COMPANIES AND GOVERNMENTAL AGENCIES WHO MIGHT HAVE UTILITY LINES ON OR ABOUT THE PREMISES, OR WHO MIGHT BE AFFECTED BY THE CONSTRUCTION. THE CONTRACTOR SHALL ALSO COORDINATE HIS ACTIVITIES WITH THE UTILITY COMPANIES TO ENSURE COMPLIANCE WITH THE PROJECT SCHEDULE ESTABLISHED BY THE GENERAL CONTRACTOR. THE CONTRACTOR SHALL MAKE EVERY EFFORT TO PROTECT EXISTING UTILITY LINES, AND SHALL REPAIR ANY DAMAGES AT HIS OWN EXPENSE.
 3. UNLESS OTHERWISE SPECIFIED, THE CONTRACTOR SHALL BE RESPONSIBLE FOR HIS OWN CONSTRUCTION STAKING.
 4. UNLESS OTHERWISE STATED IN THE GENERAL CONDITIONS, THE CONTRACTOR SHALL BE RESPONSIBLE FOR ALL TESTING. THE SOILS LABORATORY SHALL DETERMINE THE SUITABILITY OF EXISTING ON SITE MATERIAL PRIOR TO BEGINNING ANY FILL OPERATIONS.
 5. THE CONTRACTOR SHALL BE RESPONSIBLE FOR ERECTING AND MAINTAINING BARRICADES AND OTHER TRAFFIC CONTROL DEVICES AS NECESSARY AROUND THE PERIMETER AND ADJACENT TO PROPOSED EXTENSION OF HIGHLAND PARK BLVD.
 6. DURING CONSTRUCTION AND UNTIL SUCH TIME AS VEGETATION IS REESTABLISHED, THE CONTRACTOR SHALL KEEP EXPOSED DIRT AREAS WITHIN THE LIMITS OF CONSTRUCTION AND IN STOCKPILE AREAS, DAMPENED TO PREVENT BLOWING DUE TO WIND.
 7. THE CONTRACTOR SHALL BE RESPONSIBLE FOR PROVIDING AND MAINTAINING ADEQUATE EROSION PROTECTION DURING CONSTRUCTION AND FOLLOWING CONSTRUCTION, UNTIL SUCH TIME AS PROPER VEGETATION IS REESTABLISHED. THE CONTRACTOR SHALL CONSTRUCT AND MAINTAIN A COMBINATION ROCK BAGS AND FILTER FABRIC BARRIER.
 8. THE CONTRACTOR MUST FILE A "NOTICE OF INTENT" WITH THE DEPARTMENT OF ENVIRONMENTAL QUALITY ON DEQ FORM 905-002A PRIOR TO COMMENCING WITH EARTHWORK, CLEARING AND DEMOLITION OPERATIONS.
 9. SOLID SLAB SOD SHALL BE PLANTED AS SHOWN ON C-3 AT COMPLETION OF CONSTRUCTION.



EROSION CONTROL LEGEND

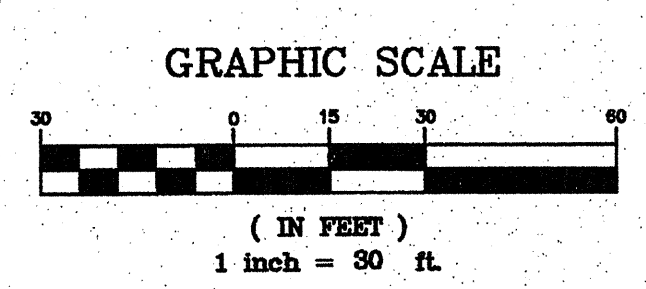
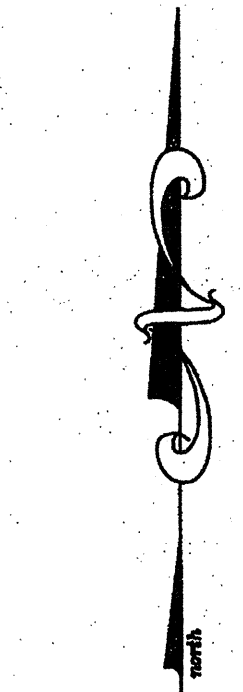
- X-X-X-X-X-X-X-X- SILT FENCE
- X-X-X-X-X-X-X-X- ROCK BAGS
- [Hatched Box] TEMPORARY CONSTRUCTION ENTRANCE/EXIT

SURVEY LEGEND

- B-B-B-B-B-B-B-B- BARRIERS
- C-C-C-C-C-C-C-C- CHAIN LINK FENCE
- D-D-D-D-D-D-D-D- DOWN SPURT
- E-E-E-E-E-E-E-E- ELEC. OVERHEAD
- F-F-F-F-F-F-F-F- FIRE HYDRANT
- G-G-G-G-G-G-G-G- GAS METER
- H-H-H-H-H-H-H-H- GAS VALVE
- I-I-I-I-I-I-I-I- IRON
- J-J-J-J-J-J-J-J- JUNCTION BOX
- K-K-K-K-K-K-K-K- KEEPER
- L-L-L-L-L-L-L-L- LIGHT POLE
- M-M-M-M-M-M-M-M- MAIL BOX
- N-N-N-N-N-N-N-N- PIPELINE
- O-O-O-O-O-O-O-O- OPERATOR
- P-P-P-P-P-P-P-P- POWER POLE
- Q-Q-Q-Q-Q-Q-Q-Q- PULL BOX
- R-R-R-R-R-R-R-R- ROAD SIGN
- S-S-S-S-S-S-S-S- SAN. SEW. MANHOLE
- T-T-T-T-T-T-T-T- TRAFFIC SIGNAL
- U-U-U-U-U-U-U-U- UTILITY POLE
- V-V-V-V-V-V-V-V- VALVE
- W-W-W-W-W-W-W-W- WATER METER
- X-X-X-X-X-X-X-X- WATER VALVE
- Y-Y-Y-Y-Y-Y-Y-Y- YARD SIGN
- Z-Z-Z-Z-Z-Z-Z-Z- ZONE MARKER

UNDERGROUND UTILITY LINES

- F-F-F-F-F-F-F-F- FIBER OPTIC
- G-G-G-G-G-G-G-G- GAS LINE
- H-H-H-H-H-H-H-H- HYDROPHONE LINE
- S-S-S-S-S-S-S-S- SANITARY SEWER
- W-W-W-W-W-W-W-W- WATER LINE
- E-E-E-E-E-E-E-E- ELECTRIC LINE



Perkins-Tryon Public Schools
ELEMENTARY SCHOOL ADDITION
 Perkins, Oklahoma

JOB NO: 112819
 DATE: 6/28/2011
 Revisions

DRAWING TITLE
 EROSION CONTROL PLAN

C-5

SMITH ROBERTS BALDISCHWILER, LLC
 OKLAHOMA CITY OFFICE: 100 N.E. 20th Street, Oklahoma City, OK 73104, Phone: (405) 942-7004, Fax: (405) 942-8116
 CHICKASHA OFFICE: 101 E. 3rd Street, Chickasha, OK 73018, Telephone: (405) 234-1444, Fax: (405) 234-1485
 ENGINEERS • SURVEYORS • PLANNERS
 CERTIFICATE OF AUTHORIZATION NO. 3948 EXPIRES JUNE 30, 2011

R:\112819\112819_Layout.dwg Kem0152 6/28/2011