

REES ASSOCIATES INC
 ARCHITECTURE - PLANNING INTERIORS
 REES PLAZA AT EAST WHARF
 9271 LAKE MEYER PARKWAY, SUITE 300
 OKLAHOMA CITY, OKLAHOMA 73120
 P: 405.945.7320
 F: 405.945.1261

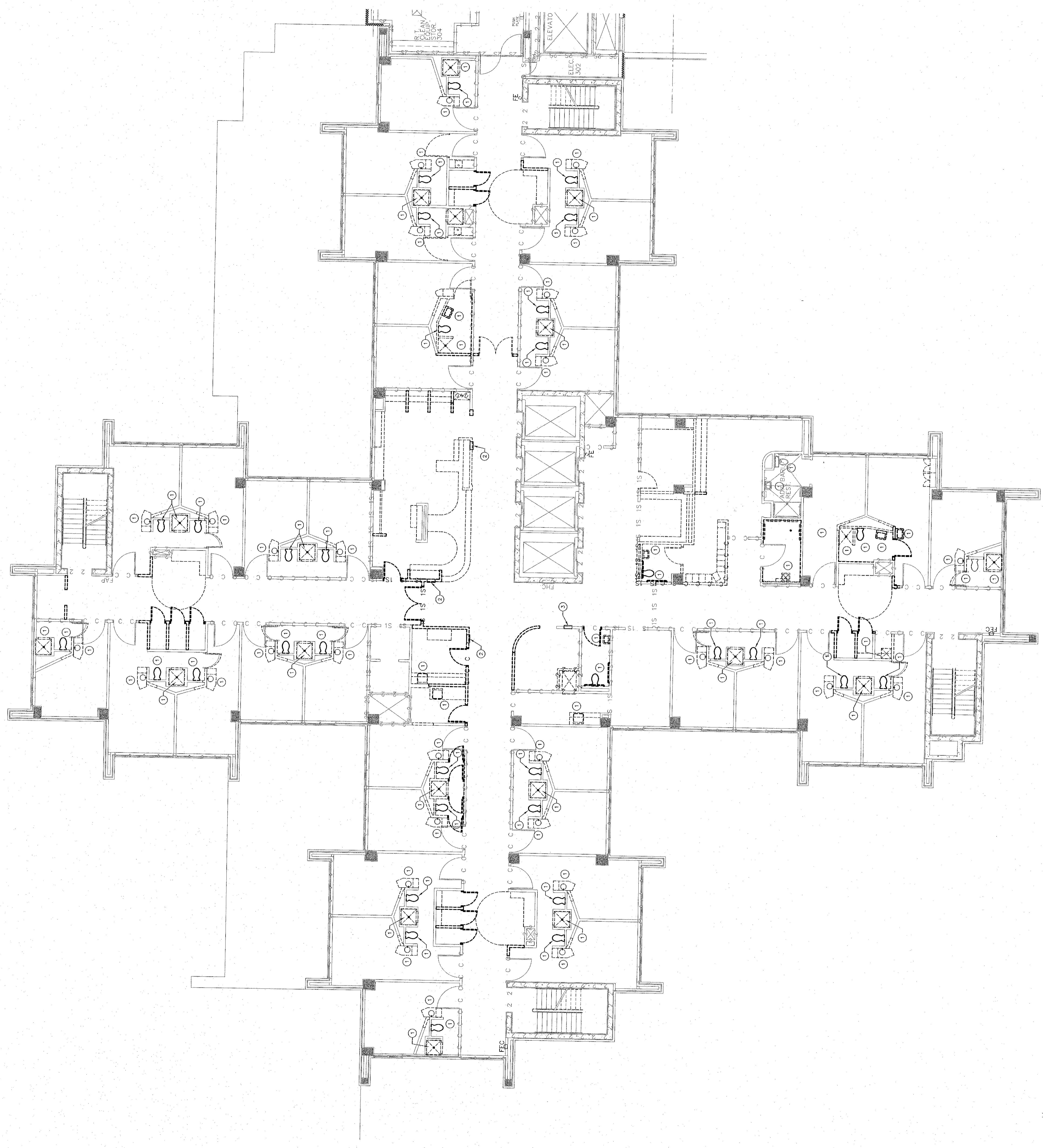
**Mechanical, Electrical,
 Plumbing Engineer**
 EDA
 2202 E 49TH, Suite 100
 Tulsa, OK 74105
 P: 918.233.4419 F: 918.743.4489
 ok 2389
 rev. 07/12

**STILLWATER
 MEDICAL
 CENTER**
 Stillwater, Oklahoma
 3rd FLOOR RENOVATION

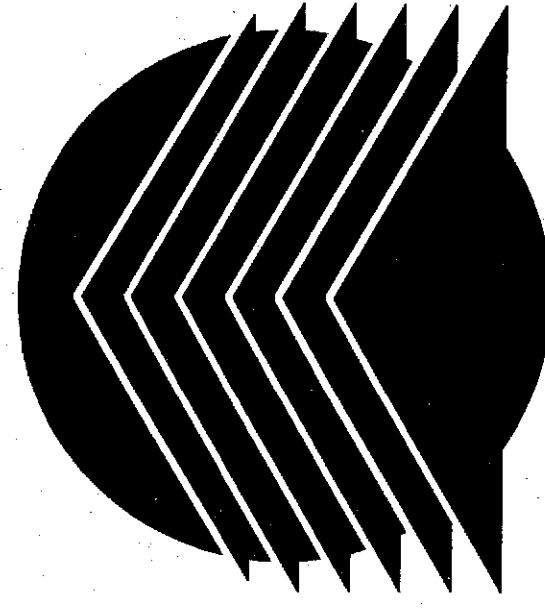
No.	Date
Revisions	
Project No.	Architect
Drawn	Checked
Approved	Engineer
Key: 2ND FLOOR PROJECT AREA MECHANICAL AND ELECTRICAL EXISTING (M/E) MECHANICAL AND ELECTRICAL PROPOSED (M/E)	
100% CONSTRUCTION DOCUMENTS	
Title: PLUMBING DEMOLITION THIRD FLOOR PLAN	
Scale: As Noted on Sheet Drawing No.	
PD-101	
Issue Date 02-06-2011 <small>© COPYRIGHT REES ASSOCIATES, INC. 2011</small>	

**PLUMBING
 DEMOLITION KEYNOTES** DENOTED BY "Ø"

- REMOVE EXISTING PLUMBING FITTINGS, CAP WATER, WASTE, AND VENT LINES FOR DEMOLITION TO NEW PLUMBING FITTURE.
- RELOCATE EXISTING GAS ZONE VALVE BOX. REFER TO P-101 FOR NEW LOCATION.



1 **PLUMBING DEMOLITION THIRD FLOOR PLAN**
 1/8" = 1'-0"



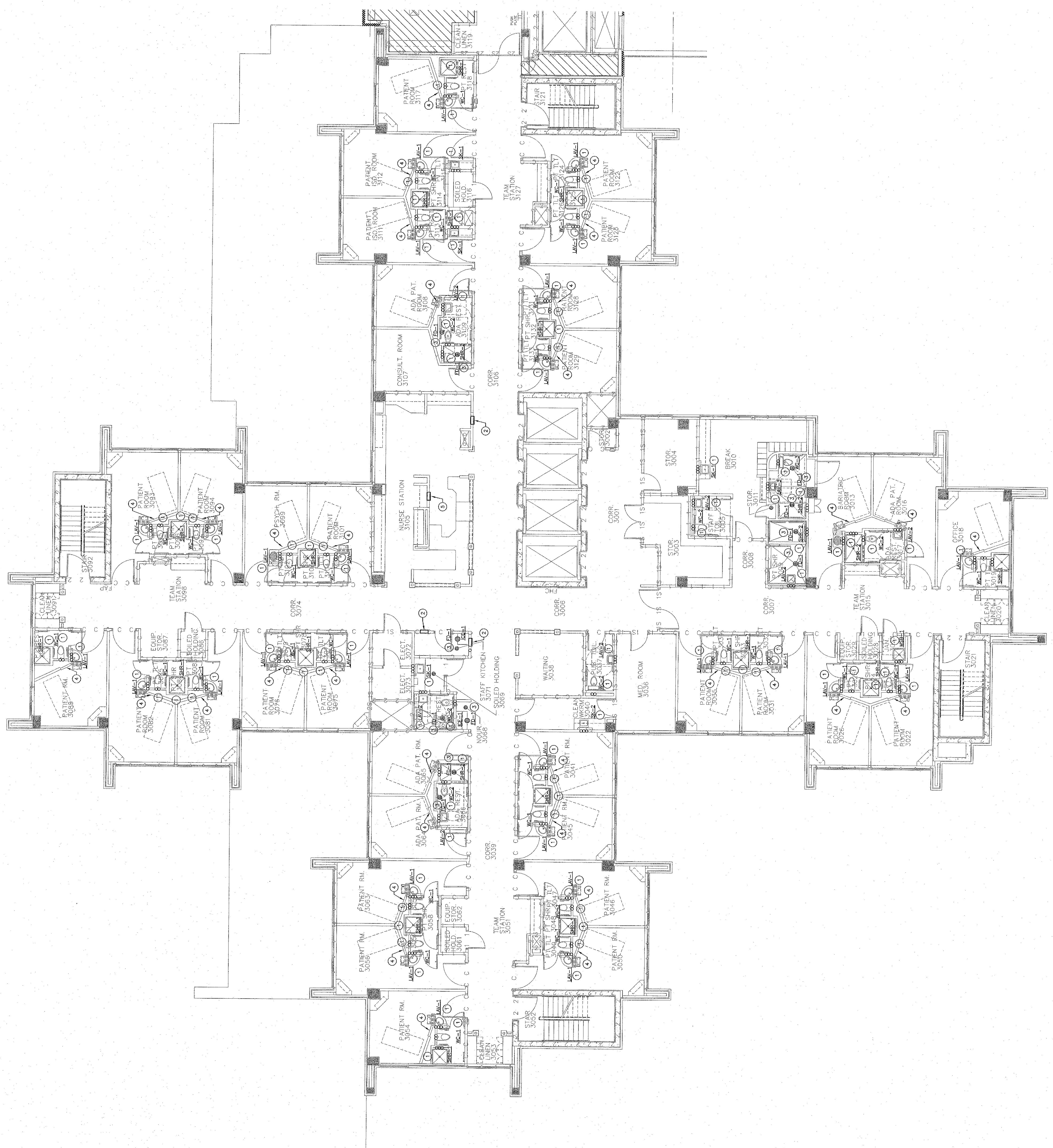
REES ASSOCIATES INC.
 ARCHITECTURE PLANNING INTERIORS
 REES PLAZA AT EAST WHARF
 9211 LAKE HEFNER PARKWAY, SUITE 300
 OKLAHOMA CITY, OKLAHOMA 73120
 P: 405.942.7337
 F: 405.945.1261

**Mechanical, Electrical,
 Plumbing Engineer**
EDA
 2303 E. 15th Ave. 100
 Tulsa, OK 74105
 P: 918-745-4419 F: 918-745-4489
 ext. 2389
 esp. 6/14/12

**STILLWATER
 MEDICAL
 CENTER**
 Stillwater, Oklahoma
3rd FLOOR RENOVATION

Revisions No. Date	Project No.	Architect W. TODD LESTER 22827 OKLAHOMA PROFESSIONAL ENGINEER	Engineer
Drawn	Checked	Approved	Key: MEDICAL AND SURGICAL WARDEN DEPARTMENT OSU DEPARTMENT (SU)
100% CONSTRUCTION DOCUMENTS			
Title: PLUMBING THIRD FLOOR PLAN			
Scale: As Noted on Sheet Drawing No. P-101			
Issue Date: 02-03-2011 © COPYRIGHT REES ASSOCIATES, INC. 2011			

- PLUMBING KEYNOTES** (REVISED BY 10/17)
1. INSTALL NEW PLUMBING FIXTURE IN LOCATION SHOWN. CONNECT WATER, WASTE, AND VENT TO EXISTING CONNECTIONS.
 2. RELOCATE MEDICAL GAS ZONE VALVE BOX TO LOCATION SHOWN. PROVIDE NEW DRAIN IN LOCATION SHOWN. CONNECT TO EXISTING NEARBY DRAIN/VENT PIPE THAT WAS CAFFED FROM PREVIOUS FIXTURE REMOVE. FIELD VERIFY EXACT LOCATION.
 3. RELOCATE MEDICAL GASES FROM EXISTING HEADWALL TO NEW HEADWALL. REFER TO ARCHITECTURAL PLANS FOR HEADWALLS IN PLACE. CONTRACTOR SHALL MAKE PIPING CONNECTIONS TO NEW HEADWALLS. CONNECTIONS SHALL BE MADE BEHIND ROOMS. REFER TO ARCHITECTURAL PLANS FOR HEADWALL ELEVATION. REFER TO 'HEADWALL ELEVATION' ON SHEET A-101.
 4. RELOCATED MEDICAL GAS WARM PANEL. RELOCATION WORK TO BE PERFORMED BY DIV. 16.



1
 1/8" = 1'-0"
PLUMBING THIRD FLOOR PLAN

